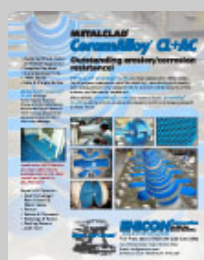




Enecon North East News
 June 2014 | Vol 6. Issue 7



Flexiclad DuraTough DL



Metalclad CeramAlloy CL+AC



Metalclad CeramAlloy CP+AC



Volume 6 Issue 6:
 Saltwater Booster Pump
 Piping Restored



Volume 6 Issue 5: Mass
 Transit Operator uses
 Enecon to Stop Leaks

Check Out Our New
 Products

Universal Hinge
www.universalhinge.com



Leak Repair Kit

2 x 167 gm A-Packs
 SpeedAlloy

1 x 250 gm unit
 SpeedAlloy QS

Plus mixing board,
 mixing knife, plastic
 applicator, reinforcement
 tape, sandpaper roll,
 alcohol wipes and
 disposable gloves...

All packed in a handy
 tool box!

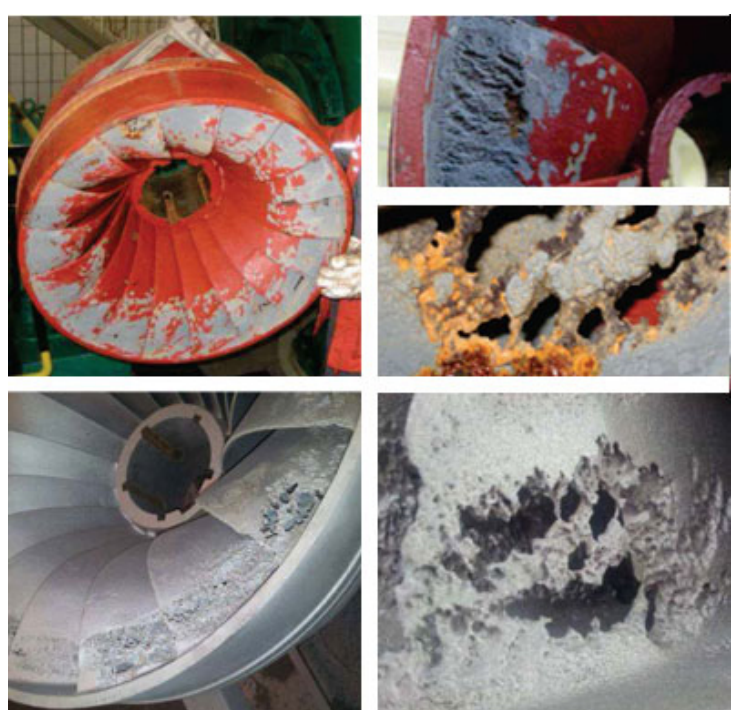


**Utility Company Repairs and Protects
 Cavitation Damage on Francis Turbine with
 CeramAlloy & DuraTough**

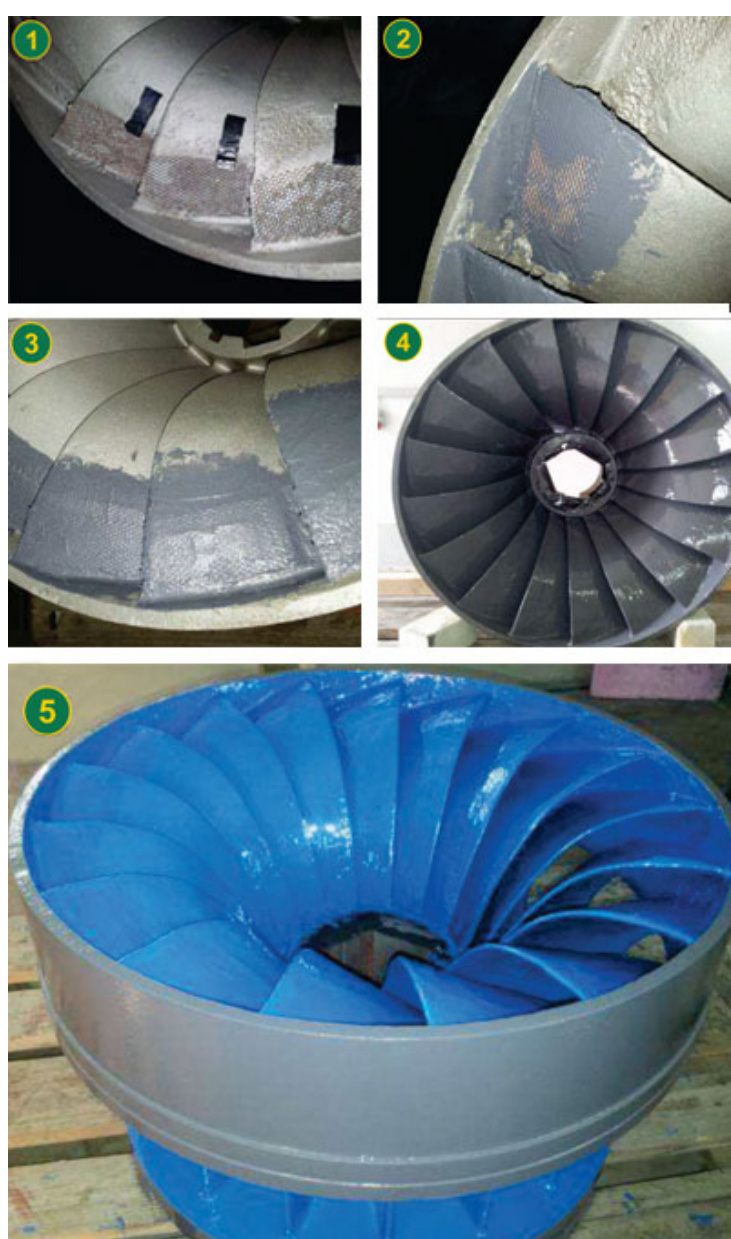


Client: Hydroelectric Plant.

Problem: Francis turbine vanes were suffering from erosion and corrosion due to the effects of cavitation after the failure of a previously applied coating.



Solution: After grit blasting the turbine, the vanes were rebuilt by tack welding steel mesh to the deeply cavitated areas. The vanes were then rebuilt with CeramAlloy CP+AC then two coats of CeramAlloy CL+AC were applied. DuraTough DL was applied to protect against future cavitation problems.



1. Steel mesh is welded to the vanes.
2. CeramAlloy CP+AC covers the mesh repairs.
3. CeramAlloy CP+AC rebuilds the vanes.
4. The turbine is coated with CeramAlloy CL+AC.
5. DuraTough DL provides the cavitation protection.

After operating for 7,000 hours, the repaired turbine was opened for an inspection and found to be in near perfect condition.

Enecon announces new Emergency Leak Repair Kit. See our "new products" on the left side of the Newsletter.

**CONTACT US TODAY TO LEARN MORE ABOUT OUR
 UNIQUE PRODUCTS AND SPECIALIZED PROJECT SERVICES**

58 Florida Street, Farmingdale, NY 11735
 Telephone: 631-414-7818
 Fax 631-414-7822
 Email: solutions@eneconaps.com
 Website: www.eneconaps.com



We Solve Your Toughest Fluid Flow Repair and Maintenance Problems

© Copyright 2014 ENECON® Northeast